

WARNING & HAZARD

LED MINI LIGHT BAR Class I

Permanent Mount, Vacuum Mount

►► NOW AVAILABLE!

FEATURES & BENEFITS

- Permanent mount models – 20 customer selectable flash patterns via external pattern select wire
- Low profile reduces drag and friction
- S-Link™ System* synchronizing capabilities with up to six other units (for hardwire models only). Allows for synchronization with other S-Link compatible products
- Magnetic and vacuum mounted products come complete with a cigarette plug for on/off function and 20 user selectable flash patterns
- 5 Year Warranty

PERMANENT MOUNT

Voltage: 12 to 24 VDC

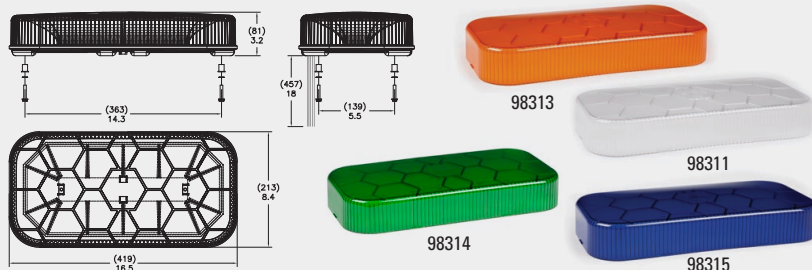
Amp Draw: 2.3 amps max

VACUUM MAGNET

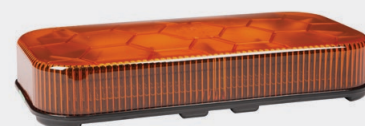
Voltage: 12 VDC

Amp Draw: 2.3 amps max

APPROVALS: SAE J845 CLASS I ● AMBER ● BLUE ○ CLEAR NOT SAE APPROVED: ● GREEN



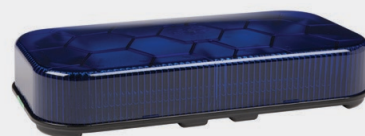
PART #	DESCRIPTION	MOUNT	COLOR
78020	LED Mini Light Bar	Permanent	● Amber/Blue
79053	LED Mini Light Bar	Permanent	● Amber/Clear Lens
78023	LED Mini Light Bar	Permanent	● Amber
78025	LED Mini Light Bar	Permanent	● Blue
78024	LED Mini Light Bar	Permanent	● Green
78130	LED Mini Light Bar	Vacuum Magnet	● Amber/Blue
79060	LED Mini Light Bar	Vacuum Magnet	● Amber/Clear Lens
78133	LED Mini Light Bar	Vacuum Magnet	● Amber
78135	LED Mini Light Bar	Vacuum Magnet	● Blue
78443	LED Mini Light Bar	Magnetic	● Amber
SERVICE PARTS			
98311	Replacement Lens		○ Clear
98313	Replacement Lens		● Amber
98315	Replacement Lens		● Blue
98314	Replacement Lens		● Green



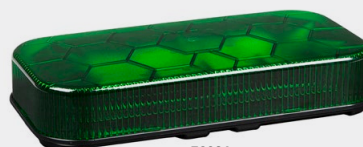
78023



78020



78025



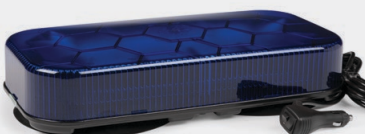
78024



78133



78130



78135



78443

S-Link is a Trademark of Star1889 Headlight & Lantern Co.

FOR MORE INFORMATION VISIT
OUR WEBSITE AT GROTE.COM

GROTE'S GOT IT!

***S-LINK TECHNOLOGY:** S-Link System is a proprietary technology that will allow similar S-Link products to be synchronized. This would allow for a user to define the flash patterns on multiple devices for a customized, tailored look on a vehicle. Note: Only S-Link compatible products can be synchronized together. Refer to user installation manuals for details on S-Link Synchronization.

Grote

2600 Lanier Drive
Madison, Indiana 47250
Tel: 800.628.0809
Fax: 812.265.8440
www.grote.com

CONNECT & PROTECT